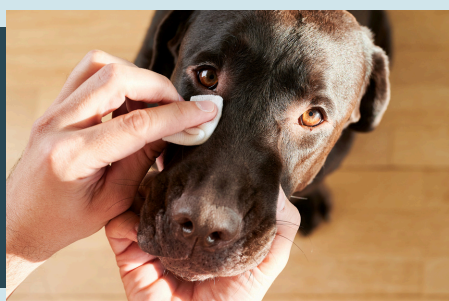


What is Blepharitis?

Blepharitis is inflammation of the eyelids. It can affect one or both eyes and may involve the skin, the eyelid margin, and/or the meibomian glands that produce part of the tear film. Blepharitis is often uncomfortable and may cause long-term eye problems if left untreated.



Common Signs

- Red, swollen eyelids
- Crusting or scabbing along the eyelid margins
- Itching or pawing at the eyes
- Excessive tearing or discharge (clear, yellow, or green)
- Conjunctival redness/inflammation with or without corneal ulcers
- Loss of fur around the eyes
- Squinting or sensitivity to light

Common Causes

- Allergies (environmental, food, insect bites)
- Infections (bacterial, fungal, parasitic)
- Immune-mediated diseases (where the body's immune system attacks the eyelids)
- Congenital or anatomical issues (such as abnormal eyelid structure or poor tear quality)
- Tumors or growths affecting the eyelid

Diagnosis & Treatment

Our veterinary ophthalmologists may recommend:

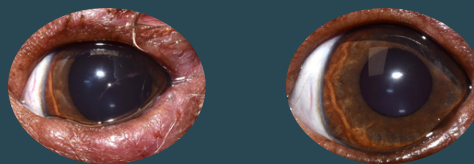
- A thorough eye and eyelid exam
- Cytology (looking at cells under a microscope)
- Culture to identify infections
- Allergy testing or bloodwork
- Biopsy (in some cases)

Treatment depends on the underlying cause and may include:

- Topical medications (antibiotic and anti-inflammatory eye drops/ointments)
- Oral medications (antibiotics, anti-inflammatories, or immune-modulating drugs)
- Warm compresses to loosen crusts, reduce inflammation, and improve comfort
- Eyelid cleaning with veterinarian-recommended wipes or solutions
- Treatment of underlying conditions (allergies, systemic disease, etc.)

With appropriate treatment and monitoring, many pets improve significantly. However, some causes of blepharitis are chronic and may require long-term management and/or additional diagnostic testing.

Before & After Treatment



Home Care Tips

- Give all medications exactly as prescribed, even when the eyes and eyelids start looking better.
- Keep the eye area clean—ask our team for safe cleaning techniques.
- Prevent scratching by using an Elizabethan collar if needed.
- Watch for worsening redness, swelling, discharge, or squinting. Contact us right away if these occur.